

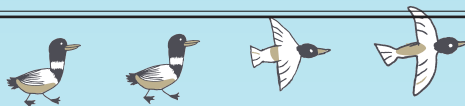
Welcome to

THE UNIVERSITY
OF
SHIGA PREFECTURE

CAMPUS GUIDE



CONTENTS

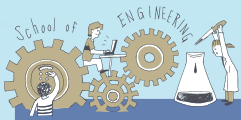
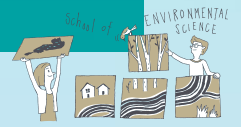


- 03 Message from the President
- 04 University Organization Chart
- 05 History / Number of Faculty and Staff / Student Enrollment
- 06 Tuition / Life in Hikone City
- 07 A Distinctive Approach to Education
- 09 School of Environmental Science
 - Department of Ecosystem Studies
 - Department of Environmental Policy and Planning
 - Department of Design and Architecture
 - Department of Biological Resources Management
- 11 School of Engineering
 - Department of Materials Science
 - Department of Mechanical Systems Engineering
 - Department of Electronic Systems Engineering
 - Center for Glass Science and Technology
- 13 School of Human Cultures
 - Department of Regional Studies
 - Department of Living Design
 - Department of Nutrition
 - Department of Human Relations Studies
 - Department of Intercultural Communications
- 15 School of Human Nursing
 - Department of Human Nursing
- 16 Research Activities
- 17 Graduate Schools
 - Graduate School of Environmental Science
 - Graduate School of Engineering
 - Graduate School of Human Cultures
 - Graduate School of Human Nursing
- 19 Affiliated Facilities
 - Library and Information Network Center
 - Gymnasium
 - Collaborative Research Center
 - Center for Community Cooperation
- 21 International Exchange
- 23 Academic Calendar
- 24 Around USP
- 25 Campus Map



09

School of Environmental Science



11

School of Engineering



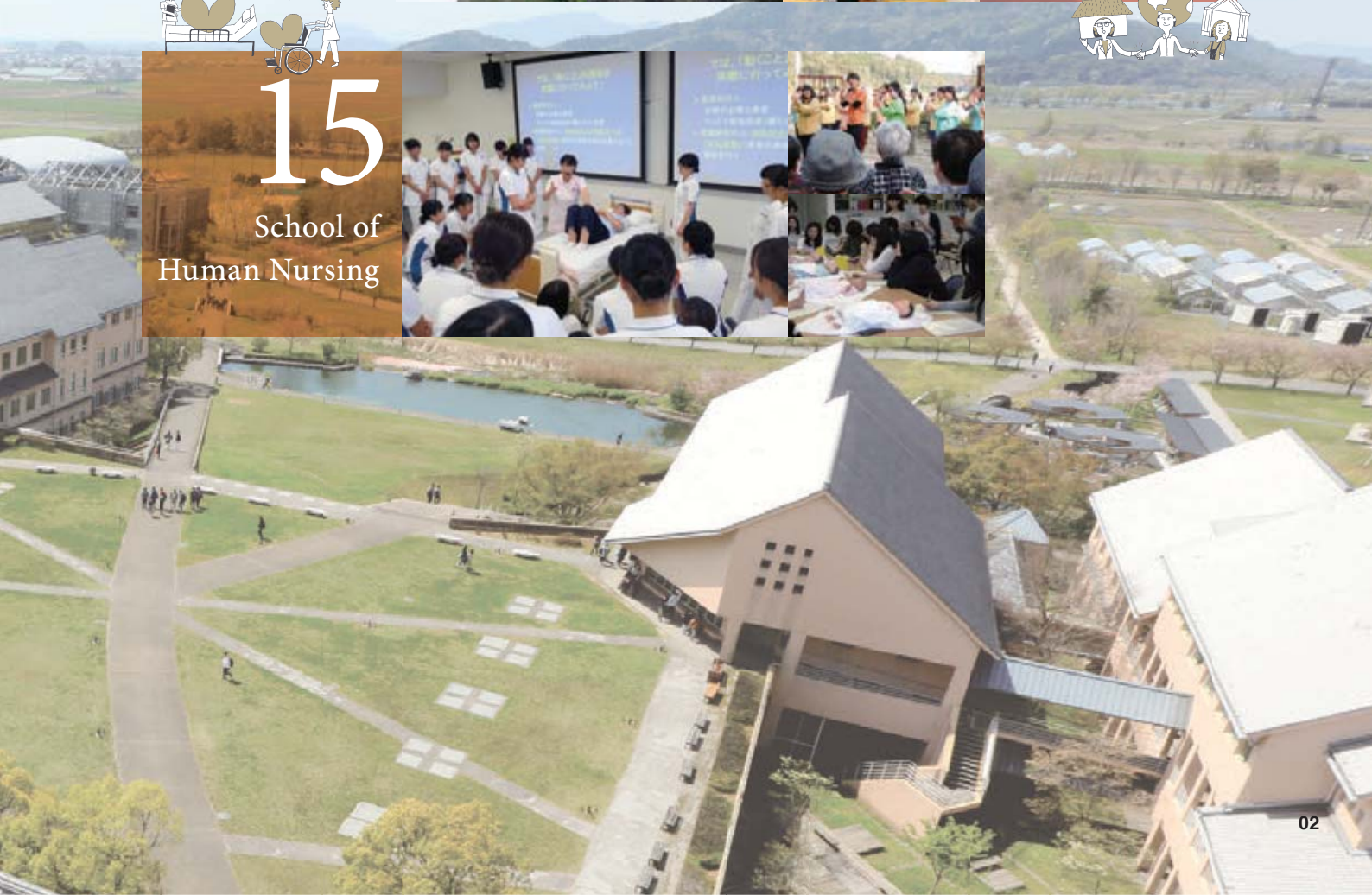
13

School of Human Cultures



15

School of Human Nursing



Message from the President

The University of Shiga Prefecture was established in 1995 with the theme of “Rooted in the region, studying the region, contributing to the region” and the motto, “Our campus is Lake Biwa and our text is Humanity.”

The campus is located on the eastern shore of Lake Biwa, in Hikone City, making a perfect fit into a magnificent landscape with the background of Mt. Ibuki to the north, the Suzuka mountains to the east, and the Hira mountains across the lake to the west. Surrounded by beautiful nature, the campus is traversed by moats and streams whose waters connect with Lake Biwa. Inside the main circular moat are the school symbol “Pencil Tower,” the library, a cafeteria, lecture rooms, and administration offices. Outside the moat are the four main schools of the university (with thirteen departments) and four graduate schools (with nine divisions). About 2,800 undergraduates study general education courses along with school and department specific courses. The common idea for all studies is “To learn how to live in nature with harmony.”

Students can learn not only on campus, but also from Lake Biwa and the region around it, which is traditionally known as “Ohmi.” To study and experience the Ohmi region, USP instituted “Ohmi Gakushi” (Ohmi Bachelor) as an undergraduate course in the Department of Regional Studies and “Ohmi Kanjin” (Ohmi sub-major) as a graduate course in the Division of Regional Studies. Students learn basic knowledge of cultural activities in Ohmi Gakushi and participate in practical aspects in Ohmi Kanjin. In an extracurricular activity called “Ohmi Rakuza,” approximately 400 to 500 students every year volunteer to work in regional communities to resolve local problems.

We provide education, research and regional contribution based on the theme “Rooted in the region, studying the region, contributing to the region.” Furthermore, we put effort into providing short and long term study abroad for students to become more international and to have broader points of view.

I have high hopes and confidence that all our students will take the initiative in their studies and related experiences to further their personal growth.

廣川 能嗣

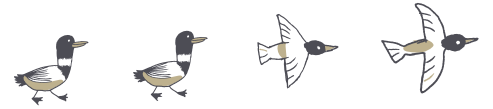
Yoshitsugu HIROKAWA

President, The University of Shiga Prefecture

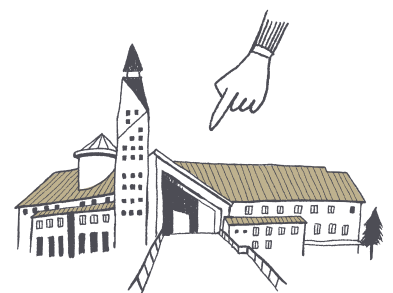
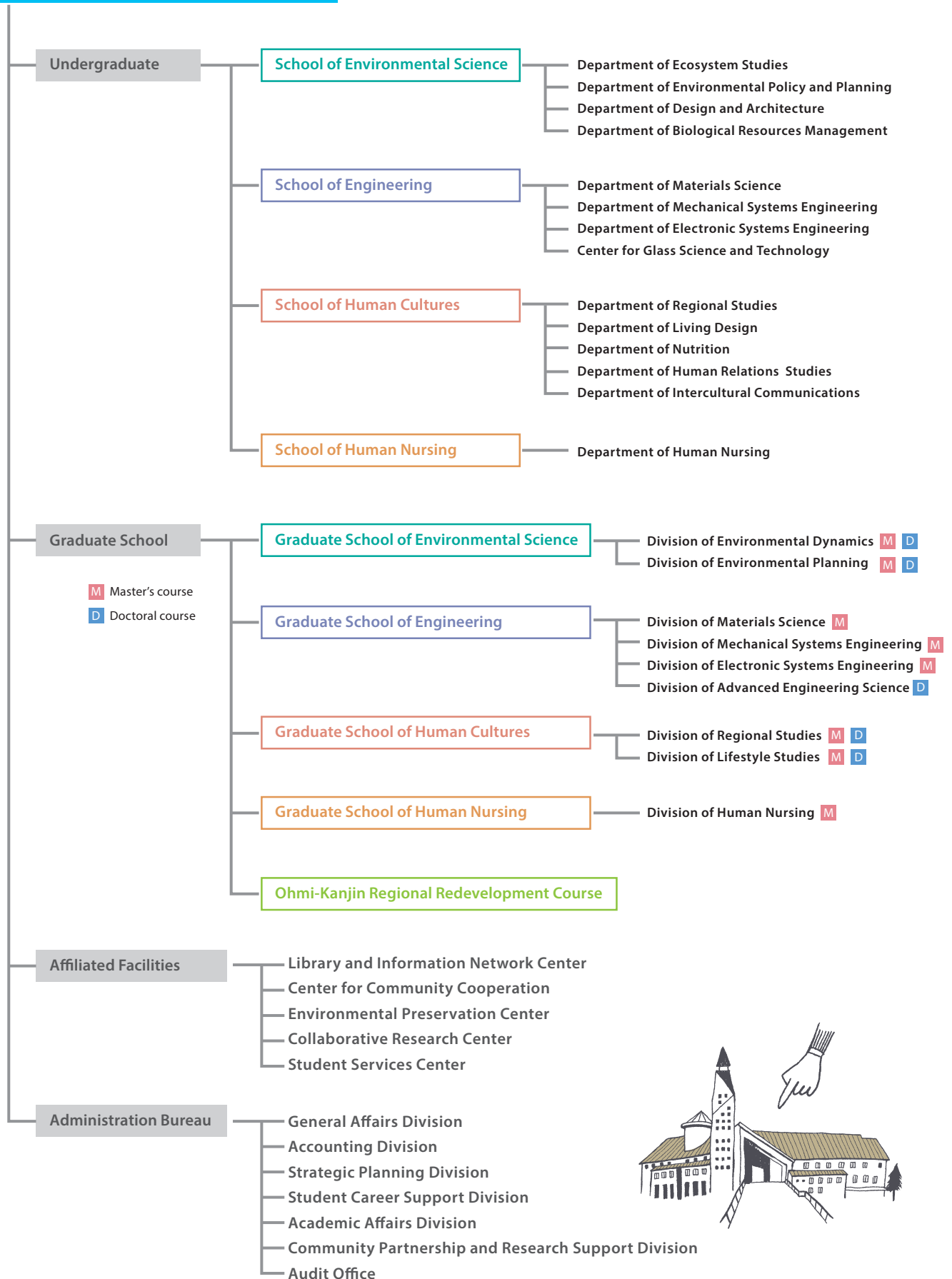
Profile

Dr. Yoshitsugu HIROKAWA: Born in Kyoto Prefecture in 1951. Awarded Dr. Eng. at Kyoto University in Engineering. Specialist in functional polymers and polymer gel studies. Author of numerous publications in English and Japanese including “Volume Phase Transition in a Non-ionic Gel.”

University Organization Chart



The University of Shiga Prefecture

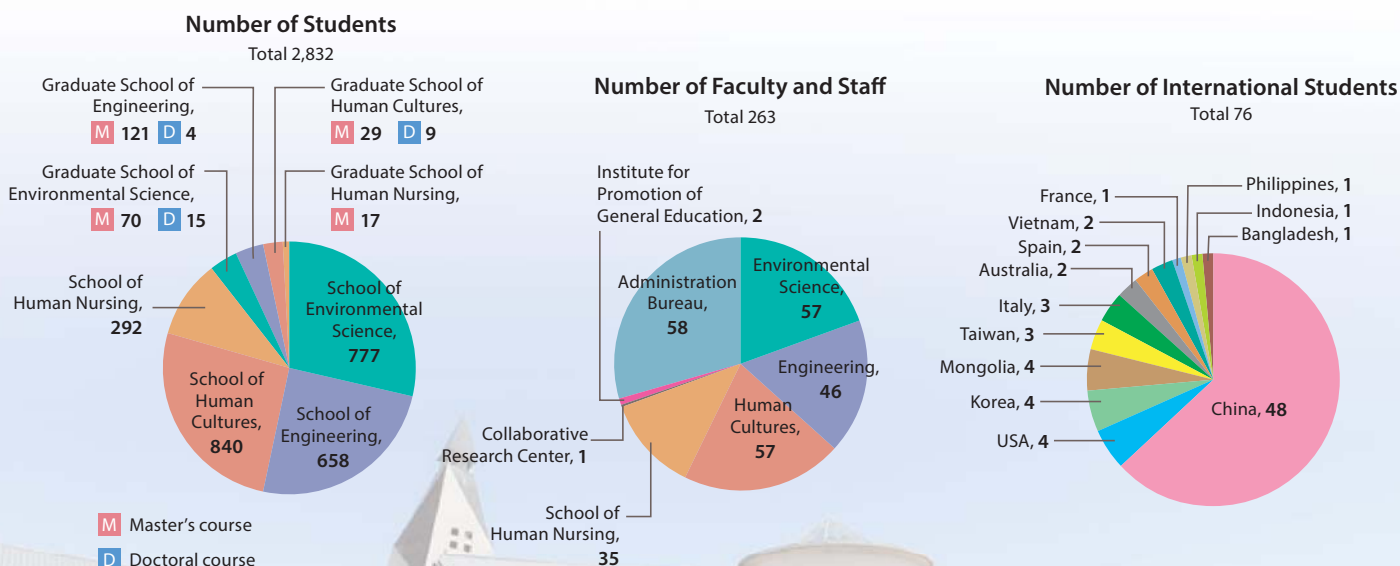


History of The University of Shiga Prefecture

1950 April	The Junior College of Shiga Prefecture (Technical Department, Liberal Arts Department) was founded. The Agricultural Junior College of Shiga Prefecture (Agricultural Department) was founded.
1956 April	The Junior College of Shiga Prefecture was restructured (into a Technical Department, Agricultural Department, and a Home Economics Department).
1958 March	The Agricultural Junior College of Shiga Prefecture was phased out.
1971 April	The Nursing Department was established.
1992 September	Basic framework of The University of Shiga Prefecture was developed.
1995 April	The University of Shiga Prefecture was founded.
1996 March	The Nursing Department of Junior College of Shiga Prefecture and the Technical/Agricultural/Home Economics Department were phased out.
1996 April	The College of Nursing of the University of Shiga Prefecture (an affiliated college) was opened.
1999 April	The Graduate School Master's Course (Environmental Science, Engineering, Human Cultures) was opened.
2001 April	The Graduate School Doctoral Course (Environmental Science, Engineering, Human Cultures) was opened.
2003 April	The School of Human Nursing was opened.
2005 March	The College of Nursing was phased out.
2006 April	Public University Corporation : The University of Shiga Prefecture was formed.
2007 April	The Graduate School Master's Course (Human Nursing) was opened.
2008 April	The Department of Electronic Systems Engineering, in the School of Engineering was set up. The School of Environmental Science and the School of Human Cultures were restructured.
2009 April	The second term of the Doctoral course in the Engineering Graduate School was restructured. The Division of Advanced Engineering Science was set up.
2012 April	The Department of Intercultural Communications in the School of Human Cultures was set up. The Division of Electronic Systems Engineering Master's course in the Engineering Graduate School was set up.

Number of Faculty and Staff / Student Enrollment

As of April 1, 2017



Tuition - Undergraduates/Graduates -

Applicants in Shiga Prefecture

Admission fee		282,000 yen
Tuition fee	1st term	267,900 yen
	2nd term	267,900 yen
Total		817,800 yen

Applicants from outside Shiga Prefecture

Admission fee		423,000 yen
Tuition fee	1st term	267,900 yen
	2nd term	267,900 yen
Total		958,800 yen

※Tuition fee 535,800 yen/ per year

※Tuition waiver may be available.

Research students

Admission fee	Applicants in Shiga Prefecture	84,600 yen
	Applicants from outside Shiga Prefecture	126,900 yen
Tuition fee	per month	29,700 yen

URL <http://www.usp.ac.jp/english/kouryu/jugyoryo/>

Life in Hikone City



Although I started working at USP in 2015, I was doing the long commute from Kyoto City for one year. After living for twelve years in Kyoto, my family and I decided to move to Hikone in the spring of 2016. After years living in larger cities such as London, Sydney, and even Kyoto, I was not sure at first how I would adapt to living in a smaller town, but there are a number of reasons why I have found Hikone to be a great place to live and work.

Hikone is perhaps most famous for its castle and cultural history. The castle grounds are lovely, especially in early spring when the cherry blossoms are in full bloom. There are some great shops and restaurants on the road leading to the castle, including my favourite *unagi* restaurant and a fantastic little sake shop selling a variety of delicious local products. Another interesting place to visit is the old castle ruins on Sawayama, which can be combined with a pleasant walk through the woods.

Hikone also has several festivals throughout

Profile: Martin HAWKES

Associate Professor
School of Human Cultures
Dept. of Intercultural Communications

Research Field:
Applied Linguistics (TESOL)

Education background:
University of Leeds
School of Biomedical Sciences
BSc in Pharmacology (1999.06)

Aston University
School of Languages and Social Science
MSc in TESOL Master's Course 2009.06
PhD in Applied Linguistics 2018.06

Campus Career:
The University of Shiga Prefecture
School of Human Cultures
Dept. of Intercultural Communication
Associate Professor 2015.04 - Present

the year to enjoy with family and friends. In summer, there is the fireworks display at Matsubara beach and a few other night festivals on the lively streets around the castle. My children enjoy October's *yuruchara* festival most of all though, where they can meet dozens of popular character mascots from around Japan.

I enjoy outdoor activities, and the area around Hikone has plenty to offer. In summer, I can

go swimming in the lake at Shingaihama or fishing in one of the many rivers in the area. In winter, the nearby ski resorts have great snow and can be reached within an hour, and spring and autumn offer some nice hiking opportunities. All year round, I enjoy running or cycling to or from USP using the path that runs alongside Lake Biwa. During the light nights, after a day's work on campus, I like to run up the trails to the 1350-year-old shrine at the peak of the nearby mountain Kojinyama, where the views of the lake and mountains are spectacular.

All in all, my family and I are happy that we have made Hikone our home. It certainly has a lot to offer anybody who enjoys both culture and an outdoor lifestyle.



A Distinctive Approach to Education



A university where people can grow

One of the major features of the curriculum is that students can take specialized subjects from their first year. This lets students acquire highly specialized knowledge so they can flexibly address rapid changes occurring in the social environment, and it makes it possible to study general requirement subjects such as foreign languages and data processing at the most suitable times. In order to achieve high levels of practical experience, field work and experiments enable students to utilize the knowledge and skills that they learned in the classroom. In addition, we provide an educational environment which respects the importance of close daily interaction and communication between faculty and students through small-size classes.



A Process of Self-Discovery!

Another feature of the curriculum is the compulsory course for all students, called Humanity Studies. These classes can be taken anytime within the four undergraduate years. The classes have been established so that students can take a deep look into the world around them by experiencing and solving specific and practical problems and ask themselves what it means to be human, thus cultivating a compass and guidelines for directing their own lives and developing the ability to identify new problems and to see things from new perspectives.



Learning from the Community, Then Giving Back



Ohmi Rakuza Student Farm

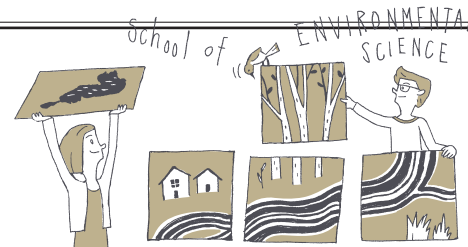
This is a community-based education program that was selected by the Ministry of Education, Culture, Sports, Science and Technology as a model educational support program. Here, students themselves come up with ideas for and select a hands-on project designed to support local culture and stimulate the community, then go through a screening involving a presentation, and finally carry out the project with assistance from specialized advisors and financial subsidies.

Ohmi Community Architects Course

This course aims to foster “community architects” who are able to organize everything from community diagnosis through to community development such as community revitalization, environmental improvement, urban renewal, and local cultural development, in order to meet the needs of Shiga Prefecture. The course was designated a MEXT (Ministry of Education, Culture, Sports, Science & Technology) “Community Revitalization Personnel Development Center Creation” program. There are two sections, one for post-graduate students and one for general citizens.



School of Environmental Science



URL <http://www.usp.ac.jp/campus/gakubu/kankyo/>



The School of Environmental Science looks to educate talented people with both a high level of expertise and a wide range of views of the surrounding environment, as well as the ability to solve environmental issues and work towards environmental creation.

Special Characteristics

01 First-year students can take specialized courses along with core courses.

To acquire a foundation in environmental science, students can take specialized courses from their freshman year, as well as core subjects in basic science and human studies, English, mathematics, and so on.

02 We provide an abundance of field-oriented classes.

"Field work" is one of the specialized subjects that students can take from their freshman year. Students go outside of the campus to discover the relationships between human activity, local communities, and the natural environment with their own eyes.

03 Our texts are the natural and social environments and community development in the area around Lake Biwa.

We learn not only about environmental issues around Lake Biwa, but also about the harmony between nature and human society by studying Lake Biwa itself and the regional environment and living spaces around the university.

The world today faces three major challenges: food production, energy supply, and environmental conservation. It is hard to imagine the many changes that have occurred in our natural environment in just the few past decades. Nevertheless, the environment around us continues to transform. Environmental issues are getting bigger and more serious, even enough to threaten us. Such issues include regional problems like eutrophication of lakes and marshes and global issues like climate change and acid rain.

In order to create a harmonious natural environment and human society, we need a wide range of views on environmental issues, knowledge, and technology to solve these problems. The School of Environmental Science looks to educate talented people who possess high levels of expertise, technique and understanding of our surrounding environment, and the ability to resolve environmental issues by conducting research from the perspectives of both natural and social sciences.



Investigating the interaction of human and natural systems.



Investigating sustainable biological production and management.



School of Environmental Science

Ecosystem Studies

Environmental Policy and Planning

Biological Resources Management

Design and Architecture



Investigating social systems harmonious integration with the environment.



Investigating the interaction of architecture and urbanism with the environment.





Department of Ecosystem Studies



The Department of Ecosystem Studies conducts basic and advanced research to solve problems related to environmental formation processes around Lake Biwa, the effect of non-native species, and the impact of global warming on ecosystems. Students acquire fundamental knowledge and problem-solving skills through four years of study.

◀ Terrestrial Environmental Studies and Lab

Survey of dandelion distribution on campus.



Department of Environmental Policy and Planning



The Department of Environmental Policy and Planning studies relationships between societies and environments from multi-disciplinary perspectives. Students learn not only from books or the internet but by going to local areas, not only around Lake Biwa but across Japan and in other countries, and talking to the people who live and work there. Our motto is, "Look for questions, not for answers."

◀ Facing waste and landfill problems in the Philippines



Department of Design and Architecture



The Department of Design and Architecture at USP is part of the School of Environmental Science rather than the School of Engineering, so as to go beyond the framework of engineering-based architecture and to emphasize the viewpoint that architecture is rooted in relationships among nature, humanity, and society. Activities include off-campus fieldwork, wooden manufacturing, earthquake reconstruction support in the Tohoku area, and international architecture workshops.

◀ Practical Training in Design Basics

Students enrolled in the program learn the first steps in design—drawing, modeling, presentation skills and more.



Department of Biological Resources Management

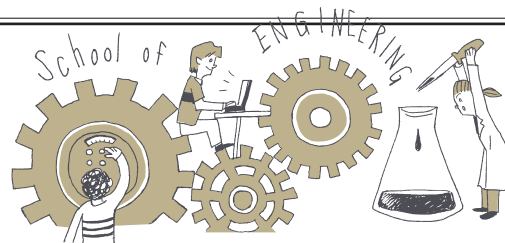


Students in the Department of Biological Resources Management study techniques and knowledge of farming, forestry and fishing, but the biggest difference between the department and a conventional department of agriculture is that studies are carried out from the viewpoint of establishing sustainable systems and reducing environmental loads. Students learn widely across various fields, including horticulture, genetics, microorganisms, aquaculture, animal husbandry, agricultural, engineering, chemistry, and economics.

◀ Biological Resources Management Lab and Practical Training V

Sampling fish RNA.

School of Engineering



URL <http://www.usp.ac.jp/english/gakubu/kogaku/>



Engineering to build a new world of the 21st century

The next generation of engineering will be the science of creating new technologies to support harmony between mankind and the natural environment. The School of Engineering aims to educate students to work globally in building up prosperous societies. We also contribute to human development through advanced research and as a cultural and industrial hub of both Shiga and the nation.

Special Characteristics

01 Creation of coexistence with nature and technologies

Training in the School of Engineering is directly connected with craftsmanship. The Department of Materials Science studies about creation and properties of new materials. The Department of Mechanical Systems Engineering focuses on designing and producing intelligent machines such as robots. The Department of Electronic Systems Engineering investigates control and management of systems based on electric, electronic and information technologies. We foster our students to become advanced engineers with broad technical knowledge.

02 A practical curriculum encourages basic education, experiment, and practice

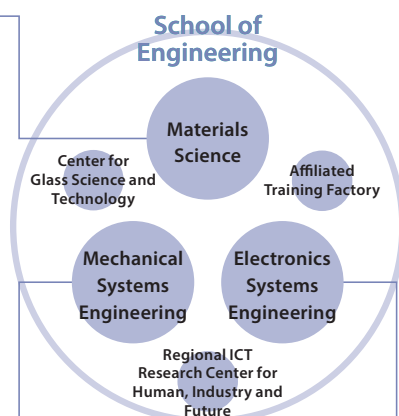
School of Engineering students spend much of their time in experiments and practices to develop unique thinking and problem-solving abilities. To become advanced engineers and scholars, senior-year students spend one full year with a faculty advisor to complete a graduation research study by learning approaches to unexplored issues.



Researching new materials to enrich human life in harmony with nature



Researching technologies and systems that can create life-enriching products



Researching technologies and systems that underlie the electrical, electronic and computing industries



Department of Materials Science

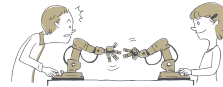


Our goal is to educate engineers and scholars who can play pivotal roles in technological advancement through new materials development that gives full consideration to harmony with nature. We provide basic to advanced education and research in inorganic materials such as metals, ceramics and semiconductors, and organic materials such as high polymers and biomaterials.

◀ Analysis and Environmental Chemistry Lab



Department of Mechanical Systems Engineering



We offer basic study of four dynamics: thermodynamics, hydrodynamics, material mechanics, and mechanics. We also add courses such as control and information to broaden and deepen students' education in a curriculum that provides a lot of practical coursework and experiments. With detailed counseling by a placement officer, we have a nearly 100% employment rate after graduation including positions at major manufacturing companies.

◀ Basic experiments deepen understanding of mechanical engineering



Department of Electronic Systems Engineering



The Department of Electronic System Engineering is composed of three pillars: electrical engineering, electronic engineering, and computer science. We focus on new energy sources and energy conservation in electrical engineering, computing and automotive AI circuitry in electronic engineering, and IT software for smartphones and social infrastructure in computer science.

◀ Electronic Systems Engineering Lab I Operation amplifier circuit testing.

Introduction to the Center for Glass Science and Technology

Jun MATSUOKA, Director

The Center for Glass Science and Technology (CGST) is an institute affiliated with the USP School of Engineering. The only university research institute in Japan specializing in glass science and technology, it was established in 2007 with a donation from Nippon Electric Glass Co., Ltd., one of the top five manufacturers of specialty glass in the world, which has its headquarters in Shiga Prefecture. The CGST conducts glass-related research and educational activities including collaborative projects with other businesses and supports students working as full-time employees.

Glass is a solid obtained by melting silicon dioxide, a main constituent of rocks, with other substances at temperatures of 1,000°C or higher, then carefully cooled down so as not to crystallize. It has not yet been physically or chemically explained why glass can exist in a stable state at all, but in any case, glass

is all around us. Besides its appearance in familiar objects such as windows, tableware, bottles, LCDs, and camera lenses, glass is used to enhance the strength of plastics, immobilize hazardous waste substances, and make optical fibers for long-distance communications. There are more than 20 types of glass in a single smartphone, some used as adhesives and coatings for the electronic components. Glass is widely used today because it can be blended with most of the elements on the Periodic Table to make various glass types, and its use continues to expand still further.

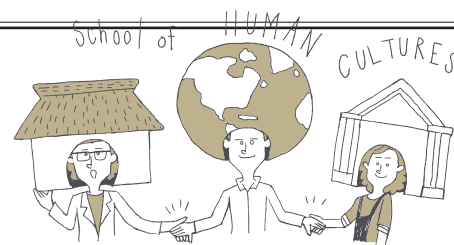
Glass does have its shortcomings which need to be overcome, such as requiring massive amounts of energy in its production and its extreme brittleness. The CGST, led by the director and three professors, researches the properties of glass melts and fracture phenomena on the atomic level leading to improved

and more reliable glass manufacturing technology, and researches increasingly efficient ways to make precision optical components.



▲ Experiment underway at CGST

School of Human Cultures



URL <http://www.usp.ac.jp/english/gakubu/jinbun/>



Fresh perspectives on human culture from the standpoint of the region and life

While on one hand, our daily life is closely tied to our local region, we are also connected with each other internationally. We see our lives changing every day in various ways. Through our research in the School of Human Cultures, we seek to grasp ideal approaches for our region as well as the world. In our school, which is comprised of five departments, we learn about our lives multi-dimensionally. Through various fieldwork we evaluate the state of the region (The Department of Regional Studies). We explore the relationship between people and things and think about ways to design that relationship (The Department of Living Design). We strive to better understand the daily maintenance of healthy food and nutrition (The Department of Nutrition). As people develop, we think about how they constitute a society (The Department of Human Relations Studies). And based on strong language skills, we develop a more “international” point of view (The Department of Intercultural Communications). In these five departments, we provide uniquely designed curriculums through the combination of general subjects, close interaction with instructors, and small class sizes.

Special Characteristics

01 Intimate dialogue between student and teacher in a small class setting

Participation in seminars, etc. fosters communication skills through individual guidance.

02 Fieldwork and results-based practical learning

We confirm and extend the knowledge and skills obtained in the classroom through “on-site” investigation, experimentation, and training.

03 A rich education with diverse points of view and a variety of methodologies

Students can acquire a keen analytical capacity through the multifaceted, interdisciplinary approach of our diverse disciplines.



Reconsidering through fieldwork how local areas function best.

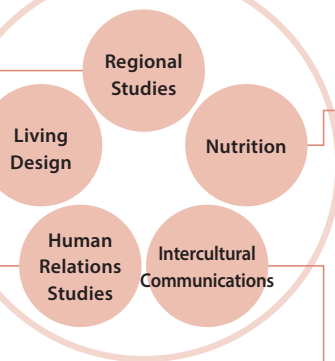


Creating new styles of living by focusing on people and physical objects.



Exploring the dynamics of development and communication styles.

School of Human Cultures



Educating students to become specialized in food and nutrition.



Learning foreign languages to become more internationally minded.



Department of Regional Studies



Students in our department are required to study local areas historically, archeologically, sociologically and geographically. They learn how to hand down our cultural heritage to the future. We provide students with various fieldwork programs. By investigating historical documents, excavation, and participant observation of local festivals, they can develop their research skills.

◀ Experiential Learning about preservation and practical uses of traditional houses

Investigating traditional structures of buildings, generating preservation plans, and refurbishing traditional family homes.



Department of Living Design



Students in the Department of Living Design take compulsory classes during freshman year in the three basics of housing, tools, and clothing, and then choose what they would like to specialize in for their undergraduate learning. Students can develop a broad perspective on designs in specific fields.

◀ Local Cooperation Program

Students organized the setup of the venue for an exhibition of a picture book titled *Poupelle of Chimney Town* as a seminar project, in Nagahama, Shiga.



Department of Nutrition



We provide students small size classes so we can offer them a better quality of education. We also have students do experiments and practical training so that they can learn basic and advanced skills in nutrition from multi-disciplinary perspectives. This will make it possible for students to develop broad points of view and advanced skills for solving unexplored issues.

◀ Graduation Research

Culture experiment on cancer cells.



Department of Human Relations Studies



The Department of Human Relations Studies educates students to participate in constructing lifestyle and social systems that encourage a hopeful humanity. Each student chooses either psychology, education, or sociology for their major. Faculty members who specialize in one of the fields teach and guide research under the keywords of “development” and “communication.” Students consider issues in modern society from multi-disciplinary perspectives by learning in many fields, taking advantage of small size classes and seminars and plenty of opportunities for practical training, practicums, and active discussions.

◀ Practical Training in Behavioral Theory

Students enrolled in the program practice looking at the world in different ways by using a mirror and learn various methods of psychological research by using familiar lifestyles and relationships with people as subject matter.



Department of Intercultural Communications



The department aims to foster an international perspective combined with language ability so that students can play an active role in either a domestic or overseas setting in the future. Students acquire robust language skills through a strong language curriculum, and also take courses to deepen their understandings of other cultures and global society. Through incorporating a study abroad experience in their undergraduate studies, students further strengthen their language skills, cosmopolitan sensibility, and ability to engage proactively.

◀ Seminar in creative writing in English

Students in the seminar read, write, and share their responses to short stories, poetry, dramas, and other genres.

School of Human Nursing



URL <http://www.usp.ac.jp/english/gakubu/nursing/>



Supporting people's desire to live as people – this is the essence of the quest of nursing

What is needed from nursing today?

Communities expect high levels of training for the nursing profession in order to realize communities in which people can live healthily for their entire lives, harmonizing with ongoing changes such as the aging society, advancements in medical technology, and diversification of health and welfare needs. Nurses



moreover need to develop the proper judgment and skills for respecting the rights of patients, helping patients pursue ways of self-care to become independent individuals, and creating optimal assistance routines, all in keeping with the circumstances surrounding each person.

Objectives of the Department of Human Nursing

Nursing is an action supporting people's needs to maintain, improve, and rehabilitate their health (or to die humanely) in an interaction between society and the environment. From viewpoints starting from the individual and continuing to the family and community levels, the School of Human Nursing holds that "people desire to live as human beings, and supporting this desire is the nature of nursing." That is, humans have an intrinsic need for humane nursing. The School of Human Nursing trains specialists who can provide care based on the idea of "the person as a human being" at each stage of life, and can accurately comprehend the feelings, customs, thoughts, and values of the patient in order to support the quality of life they desire.

Special Characteristics

01 We cultivate well-rounded individuals by providing a core curriculum.

The aim is to enhance qualities for the nursing profession with respect for the dignity of human lives and human rights through studying general courses in other USP departments and through joint ownership of pain and suffering.

02 Students learn to comprehensively understand and support people as human beings.

They acquire knowledge and techniques for becoming nursing professionals through thorough study of specialized class subjects.

03 We nurture science-based technical skills, application ability, and discernment, through on-site training integrating theory and practice.

Through lectures, seminars and practice exercises, students learn to think flexibly and respond appropriately to changing conditions and provide care tailored to patients' needs. Students learn to design care from the patient's standpoint while acquiring evidence-based techniques, all in a beneficial community context experience.



Department of Human Nursing



The Department of Human Nursing provides a learning environment to train nursing professionals who will be able to contribute to our region. The curriculum is distinctive for learning in depth all aspects of home care and community support based on the medical needs of local residents. Besides hospital nursing, students may choose to train in public health nursing or school nursing.



◀ **Adult Critical Care Practicum**
Training exercises in methods of assistance for saving lives and supporting the recovery and healing processes of adult patients.

Research Activities

URL <http://www.usp.ac.jp/english/campus/kenkyusha/index.html>

Syuhei BAN, Professor

School of Environmental Science, Department of Ecosystem Studies

Lake Biwa has been exposed to various environmental issues and anthropogenic stresses. In my laboratory, we try to find solutions to the issues through investigating microscopic plants and animals, i.e. plankton, in the lake. We are currently analyzing long-term data on the plankton collected over five decades to evaluate the effects of past eutrophication and global warming on the lake ecosystem. We are also trying to develop a procedure for analyzing physiological responses against environmental stresses in the planktonic animals using molecular techniques.



▲ Photo of a planktonic animal water flea



▲ Collecting planktonic animals with a plankton net

Satoshi YOSHIDA, Associate Professor

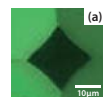
School of Engineering, Department of Materials Science Studies

The Center for Glass Science and Technology (CGST) of the School of Engineering at USP is the only glass research institute in Japan that is affiliated with a university. As a CGST member, I am doing research aimed at improving glass manufacturing technology. One of our research ambitions is to overcome the brittleness of glass. We have demonstrated how the deformation behavior of glass changes immediately prior to breaking depending on the glass component and test conditions, and elucidated how that deformation mechanism is closely related to the fracture characteristics of the glass. The results from this basic research into glass fracturing have been highly evaluated around the world.



◀ Self-made indentation microscope

(a) Under a load of 2.3 N (b) After unload



▲ Photos of the deformed region (a) and the imprint with cracks of soda-lime glass (b).

Wakana KAMEI, Professor

School of Human Cultures, Department of Regional Studies

Paintings are at the core of my research into Japanese art history, especially medieval “emaki” picture scrolls, where sections that tell the story in words alternately appear amidst graphics. What is the artist trying to say with these graphics, given the different mode of expression from text? I attempt to decipher this from the social and historical context, taking into consideration also gender and social status. During seminars, students and I look at and discuss paintings, and also visit museums, temples and shrines.



▲ Examining medieval “emaki” picture scrolls

Kyoko AMASA, Professor

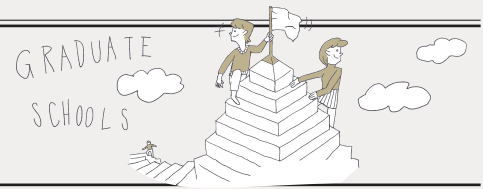
School of Human Nursing, Department of Human Nursing Studies

I am working on a mental health program for building the resilience of school children. Resilience, the ability to cope with stress and adversity, is essential for children to complete their developmental process. Having appropriate knowledge of particular mental problems enables children to recognize them in their early stages and manage them. Currently, education on mental illness is not included in the Japanese compulsory educational curriculum; it is my goal to develop an adequate program that includes this knowledge for the benefit of the children.

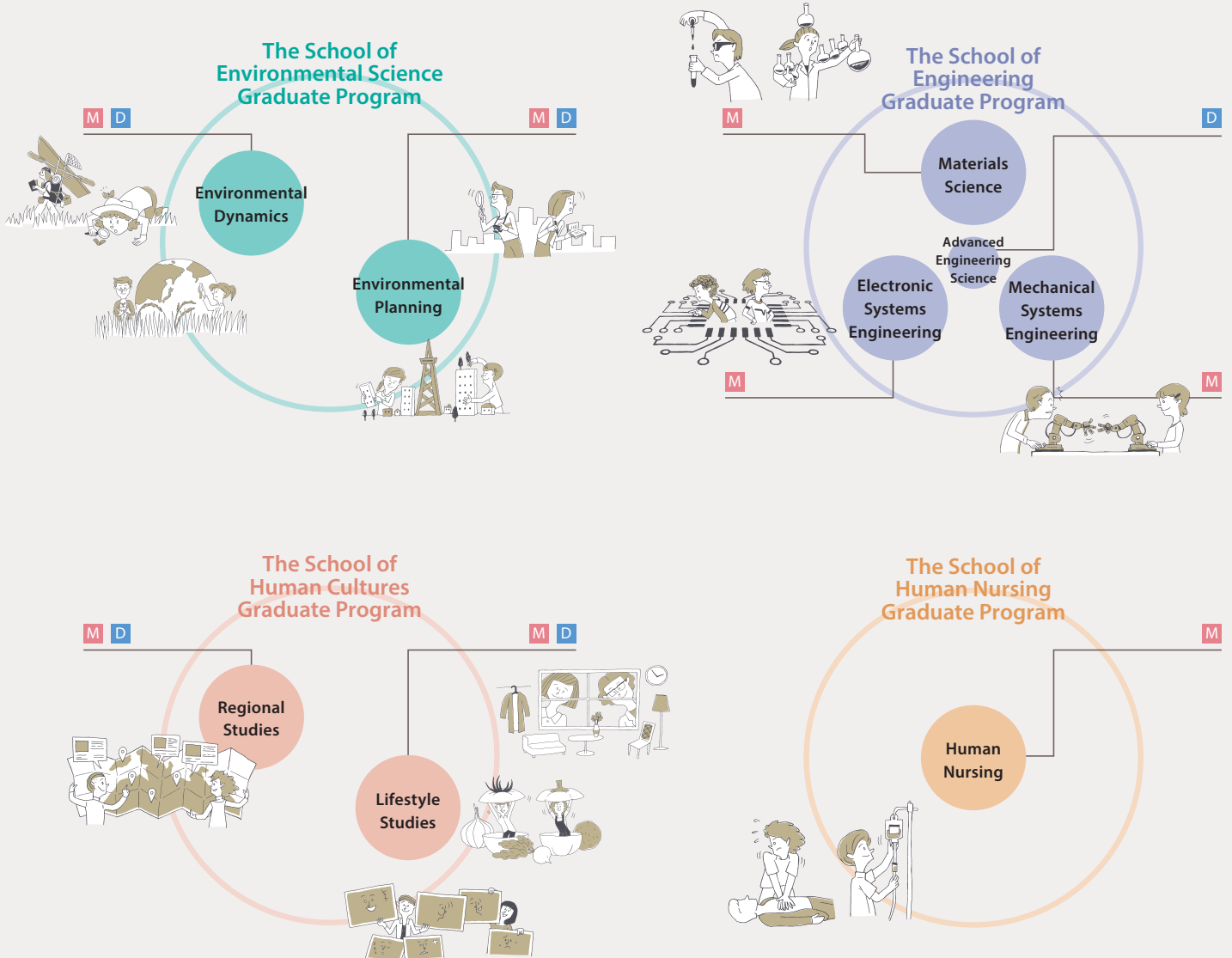


▲ Mindmatters training (with Professor Amasa second from the right)

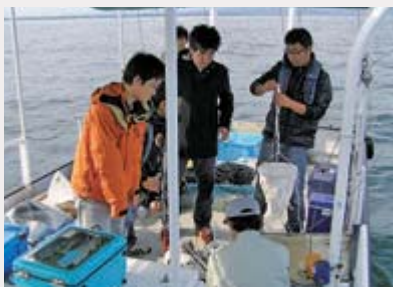
The Graduate School



M Master's course **D** Doctoral course



Graduate School of Environmental Science



▲ Ecosystem survey aboard a training boat in Lake Biwa

Division of Environmental Dynamics **M** **D**

The division of Environmental Dynamics is composed of three fields: Biosphere Environment, Ecosystem Conservation and Bio-Production. The division conducts educational research on bio-resource development and management that is compatible with conservation of ecosystems. The division interprets dynamics of the ecosystem as it relates to the global and local environments, pursuing both basic and practical research into conservation and its management.

Division of Environmental Planning **M** **D**

The division of Environmental Planning is composed of two fields: the field of Environmental Design and the field of Regional Environmental Management. This division conducts educational research on the comprehensive design of local society which can facilitate the sustainable development of human society in balance with the natural environment, along with the methodologies to achieve such balance.



Graduate School of Engineering



▲ Smart chair with proximity sensors

Division of Materials Science M

The division consists of the fields of Inorganic Materials and Organic Materials, placing an important emphasis on the development of new materials and advanced techniques which enable us to solve energy and environmental problems. The division conducts educational research on every variety of compound, from inorganic metal to organic/environmental materials.

Division of Mechanical Systems Engineering M

The division considers a machine as a distinct system and aims to implement that system's diversification and the intellectual nature of its functions by the utilization of electronic control technology. The division conducts educational research to examine the role of machine systems while considering the influence on human beings and the global environment surrounding a machine from a wide range of views including energy, materials, and processing techniques.

Division of Electronic Systems Engineering M

The division consists of the fields of Electronic Engineering and Electronic Application and Information. The division conducts educational research regarding functional electronic systems that play a creative role in future cutting-edge technology and address the diverse environmental problems that have emerged, leading to sustainable development.

Division of Advanced Engineering Science D

The doctoral program is a cutting edge specialization designed to put in place a deeper enhancement of the educational research found in the all the specializations of the master's programs.



Graduate School of Human Cultures



▲ Survey of a traditional building

Division of Regional Studies M D

There are three courses in the Division of Regional Studies: Japanese Historical Culture, Japanese Modern Regional Culture and International Culture. We research how regional societies have adapted to social change from historical, cultural and social viewpoints.

Division of Lifestyle Studies M D

The division consists of the fields of Lifestyle Design, Health and Nutritional Sciences, and Human Relations. The subject matter is lifestyle from the standpoint of life science as well as human science. By fundamentally reviewing the relationship between life and society throughout the whole human lifecycle from the viewpoints of the three fields of study, the division conducts educational research to craft a truly fulfilling healthy and comfortable life culture and living environment.



Graduate School of Human Nursing



▲ Seminar on lifelong nursing and healthcare

Division of Human Nursing M

In this graduate course, students are expected to pursue the nursing studies adopting a broad perspective, while deepening their understandings on the basis of the dignity of life. The objective of this program is to educate nurses to become capable of resolving issues through strong leadership and professionalism.



Affiliated Facilities

URL <http://www.usp.ac.jp/english/campus/centers/index.html>

Library and Information Network Center

The center functions as the university library, collecting books and periodicals, and ensuring that they are readily accessible. It also functions as the university computer center, controlling the LAN and other network systems and linking them to outside information networks, and it provides quick and comprehensive access to the latest academic and technical information. Through these vital functions, the Center supports the development of research in the university.

Number of Holdings

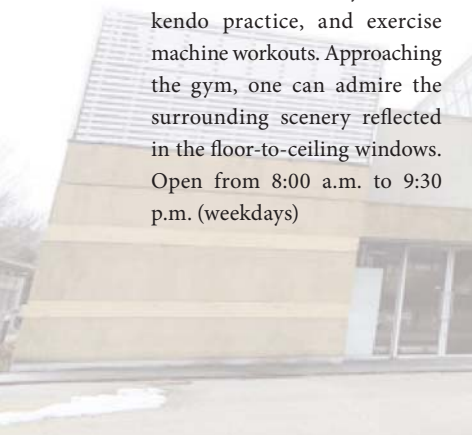
	Books	Journals
Japanese	328,381	1,329
Foreign	63,948	654
Total	392,329	1,983

As of March 31, 2017



Gymnasium

The gymnasium is designed to look like a ship in full sail. It has spaces for indoor sports such as basketball, judo and kendo practice, and exercise machine workouts. Approaching the gym, one can admire the surrounding scenery reflected in the floor-to-ceiling windows. Open from 8:00 a.m. to 9:30 p.m. (weekdays)



Collaborative Research Center



The Collaborative Research Center (CRC) at the University of Shiga Prefecture is the point facility for coordinating “triple helix” industrial-governmental-academic collaboration, promoting the research activities of the university to the public and supporting research and development through joint university - industry projects. The CRC supplies the seeds for collaborative research activities by providing technical consultation and scholarly guidance utilizing the intellectual and material resources of the university in a wide range of fields from practical instruction to information services, by holding workshops and exhibitions, and by contracting research financial funding, in this way contributing to the development of advanced technology and the creation of new business opportunities.

The CRC building.

Facilities include five research laboratories, mainly for collaborative research with USP academics, special experiment facilities, and various measuring and analyzing instruments.

Center for Community Cooperation

The Center for Community Cooperation (CCC) was established to implement and cultivate the human and intellectual resources of the university in supporting the cultural, industrial and social development of Shiga through community involvement in dealing with regional problems. Established in April 2013 as the successor to the Regional Development Education Research Center and the Research Center for Socioecological Systems, the CCC has been selected as a “Center

of Community Plus” by MEXT (Ministry of Education, Culture, Sports, Science and Technology) to encourage young adults to live in the region and to develop job opportunities in the region. The CCC also contributes to the local community by providing life-long learning projects such as extension courses and collaborative learning and research with companies, local municipalities and NPOs.





International Exchange

Exchange Agreements

USP students may study at other universities and institutions under several international agreements. For example, under reciprocal exchange agreements, students pay tuition only to their home institution; under general exchange agreements, students pay tuition to the host institution.



Studying at USP

As our student population is approximately 2,800 students, USP provides a very friendly and intimate environment in which students can quickly develop friendships and enjoy a meaningful cultural exchange and a chance for a true cultural immersion experience. There are a number of athletic clubs that one can participate in, including Basketball, Soccer, Baseball, Lacrosse, Kendo, Judo, Volleyball, Canoe, and Cycling. There are also a number of cultural clubs as well, such as Fine Arts, Orchestra, Bass Band, and Noh. Plus many, many more...

USP offers Japanese language and culture programs for students from our partner universities. While Japanese language study and cultural activities form the major elements of the program, students can also take a number of regular classes offered in English, and, depending on their level of proficiency, regular courses offered in Japanese, in History, Social Studies, Engineering, Environmental Science, etc. We work with our partner schools to ensure that our courses will be approved for credit at the home institution. Besides semester and full-year exchange programs, USP also offers an intensive program every summer, especially for partner universities,

so that students can complete the program without missing regular school time at their home universities. Extending on official sister-state agreements between Shiga and Michigan, USP and the Japan Center for Michigan Universities (JCMU), also located in Hikone, have particularly long-established exchange programs. In contrast to programs offered by big-city universities, we are confident that USP can offer a more intimate, friendly, and hands-on immersion experience. USP is eager to share its natural, historical, social, cultural and academic environment in life-shaping and life-enhancing adventures and experiences.



**Student Services Center /
Office of International Programs and Development.**

The Student Service Center provides administrative services for students at USP. We are here to assist students and to provide the information needed for their campus life. Students are encouraged to stop by for help at anytime. The Office of International Programs and Development provides consultation, from daily life matters to academic support, to international students and USP students who are interested in studying abroad. Our office is open to everyone and we provide books and information regarding language study, studying abroad, campus life, and more.

Office Hours
8:30–18:15 (during semesters)
8:30–17:15 (during breaks)





Academic Calendar



Entrance Ceremony
Orientation for New Students
Start of Academic Year
Reception for New Students
Annual Health Checkup

4



5

Spring Extension Courses
Annual Health Checkup

USP's Birthday
Summer Festival (Umikaze-Natsumatsuri)
University of Shiga Prefecture vs. Kyoto Prefectural
University Games

6



7

Open Campus



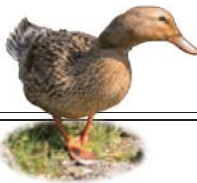
First Semester Exams
End of First Semester
Start of Summer Vacation
Intensive Lectures

8



9

Intensive Lectures
End of Summer Vacation
Start of Second Semester



10



11

School Festival (Kofusai)



12

Start of Winter Vacation

1

End of Winter Vacation
Intensive Lectures



Second Semester Exams
Graduation Theses Presentations
End of Second Semester

2



3

Spring Break
Commencement



Around USP

All of the area around USP can be considered a part of the university campus, and a setting where students can educate and enjoy themselves. There is much to learn by just walking around these areas and getting to know them. For more information, please visit the Student Services Center.

All photos by
Biwako Visitors Bureau
Travel Guide of Shiga Prefecture, Japan
URL: <https://www.biwako-visitors.jp/>



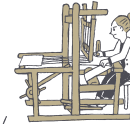
Shirahige Shrine



Manto Festival



Ukimido



Weaving



Saimyouji Temple



Biwako Valley
(skiing and snowboarding)



Hiyoshi Taisha



Lake Biwa Fireworks



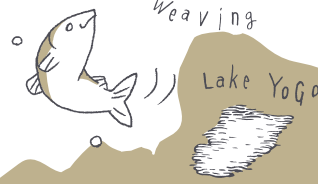
Miho Museum



The Lake Biwa Museum



Hachi manbori



Lake YoGo



Old Japanese-style House



The University of SHIGA PREFECTURE



Japan International Birdman Rally

Hikone City



Hikone Castle



Yoshi Industry



Shingai Beach



Shigaraki



Campus Map

- ❶ Baseball Field
- ❷ Teams and Clubs Building
- ❸ Gymnasium
- ❹ Tennis Courts
- ❺ Collaborative Research Center
- ❻ School of Engineering/
Graduate School of Engineering
- ❼ Machine Shop/Research Laboratory
- ❽ School of Human Cultures/
Graduate School of Human Cultures
- ❾ Center for Academic and Cultural Exchange
- ❿ Community Liaison Office
- ⓫ Cafe (Pianissimo)
- ⓬ Student Square
- ⓭ Center Square
- ⓮ University Shop
- ⓯ Library and Information Network Center
- ⓰ Administration Building
- ⓱ Cafeteria/Student Hall
- ⓲ Lecture Hall for General Coursework/School of
Human Cultures (Department of Intercultural
Communications)
- ⓳ Lecture Halls for General Coursework
- ⓴ Bus Stop
- ⓵ Information Desk
- ⓶ School of Environmental Science/
Graduate School of Environmental Science
- ⓷ Environmental Preservation Center
- ⓸ Experimental Agricultural Facility
- ⓹ Athletic Field
- ⓺ Eco Campus Center (Mokuren)
- ⓻ Parking (South)
- ⓼ School of Human Nursing/
Graduate School of Human Nursing
- ⓽ Parking (North)
- ⓾ Cafeteria (Nasheria)
- ⓿ Lecture Hall for General Coursework/Alumni
Association Hall (Kofu Hall)
- ⓿ Limnological Laboratory
- ⓿ Center for Community Cooperation
- ⓿ Convenience Store



The University of Shiga
Prefecture has a
non-smoking policy.



❸ Lecture Hall
for General Coursework/Alumni
Association Hall (Kofu Hall)



⓱ Cafeteria (Nasheria)



3 Gymnasium



9 Center for Academic and Cultural Exchange



11 Cafe (Pianissimo)



14 University Shop



16 Administration Building



17 Cafeteria/Student Hall



20 Eco Campus Center (Mokuren)



32 Limnological Laboratory

33 Center for Community Cooperation

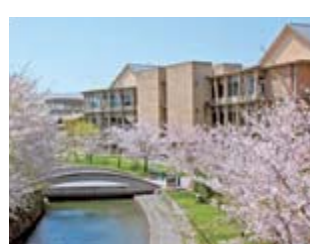
34 Convenience Store



6 School of Engineering/ Graduate School of Engineering



8 School of Human Cultures/ Graduate School of Human Cultures



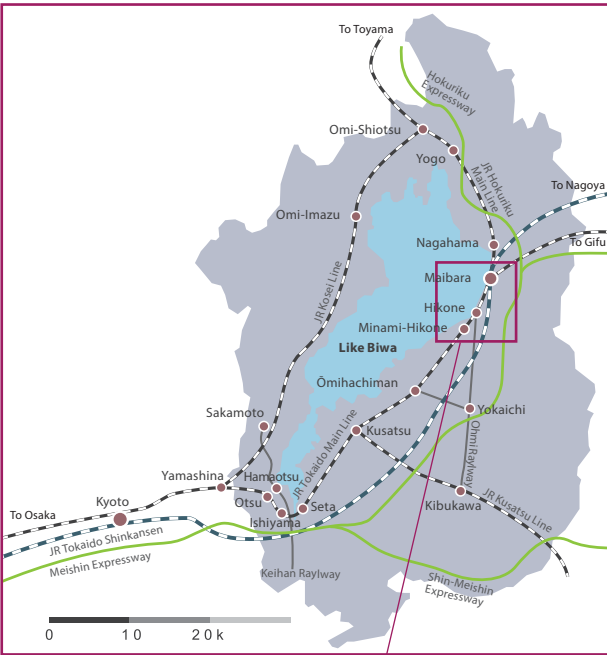
22 School of Environmental Science/ Graduate School of Environmental Science



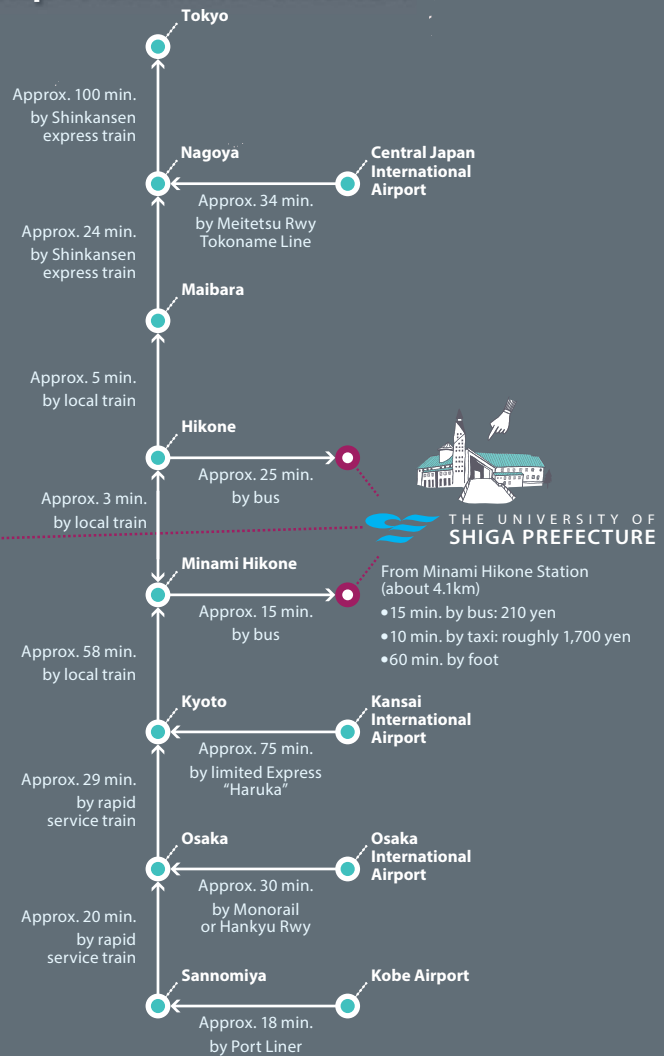
28 School of Human Nursing/ Graduate School of Human Nursing

To The University of Shiga Prefecture

- **from Tokyo**
Approx. 3 hours 10 mins.
- **from Nagoya**
Approx. 1 hours 42 mins.
- **from Central Japan International Airport**
Approx. 2 hours 34 mins.
- **from Osaka International Airport**
Approx. 3 hours.
- **from Kansai International Airport**
Approx. 3 hours 1 mins.
- **from Kobe Airport**
Approx. 3 hours 14 mins.
- **from Osaka**
Approx. 2 hours 22 mins.
- **from Kyoto**
Approx. 1 hours 30 mins.



Transportation Information



THE UNIVERSITY OF SHIGA PREFECTURE

2500 Hassaka-cho, Hikone City, Shiga Prefecture 522-8533 Japan

TEL. +81-749-28-8200 FAX. +81-749-28-8470

<http://www.usp.ac.jp/english/>

<http://www.usp.ac.jp/japanese/>